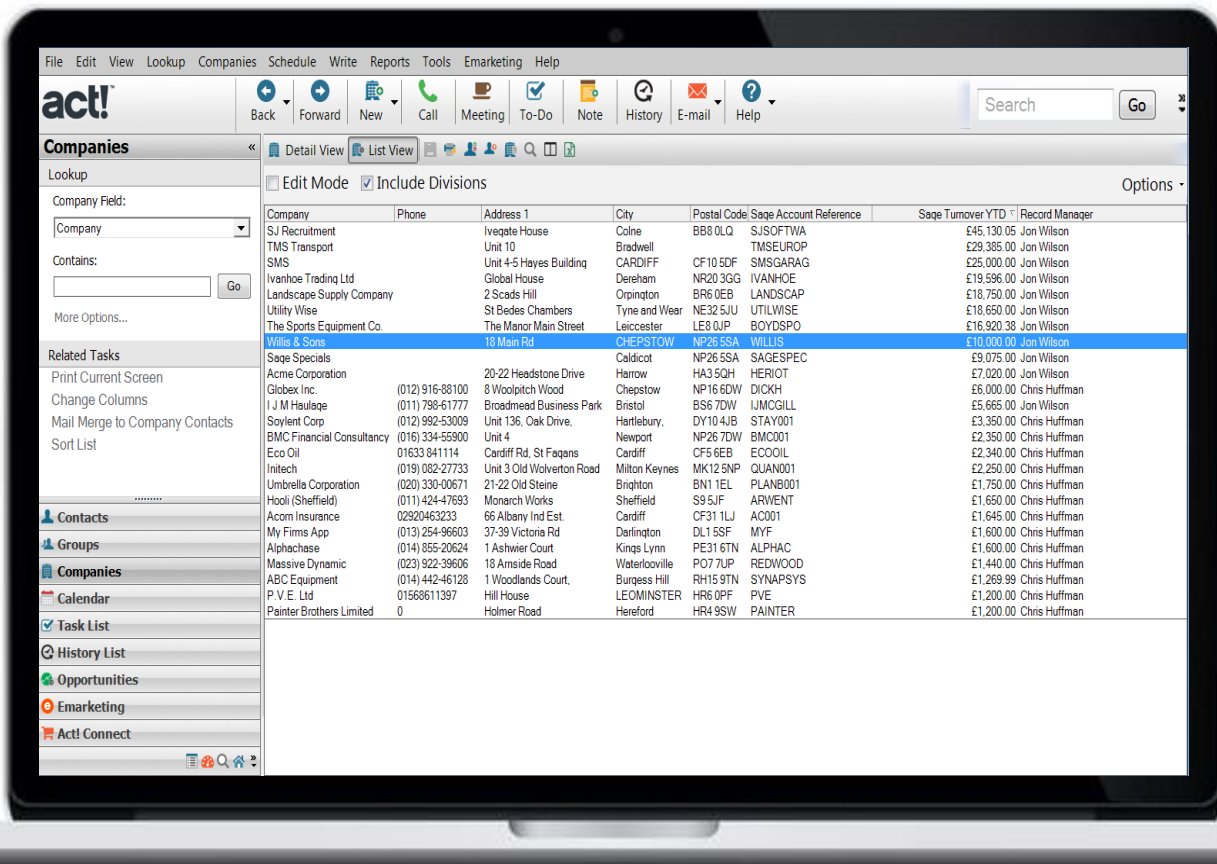




# AlphaLink



Produce better reports in Act! with AlphaLink



Extract more insightful data from your CRM with AlphaLink by creating reports in Act! based on live financial information. Enable each department of your business to work more successfully:

### Sales

Give your team more information to increase sales and manage their accounts more efficiently!

### Marketing

Market to your biggest customers or based on their buying history, and target customers more effectively!

### Customer Service

Employees have a single view of your customers, allowing them to access information, and resolve issues quickly!

Create the following reports in Act!: Highest Turnover YTD/All Customers on hold/Customers with outstanding balance over £xxx Etc.

Take a look at our other add-ons for



AlphaLink



AlphaMap



AlphaMobile



AlphaSMS



AlphaTel



t: 01291 688100

e: sales@alphalogix.co.uk

w: www.alphalogix.co.uk